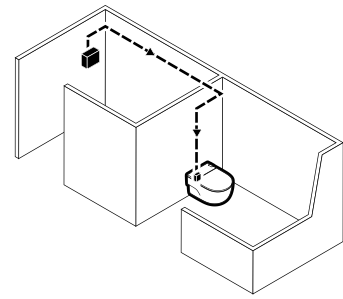


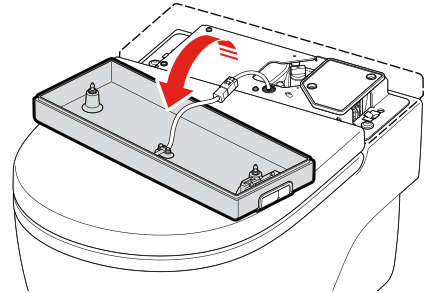


# Maintenance

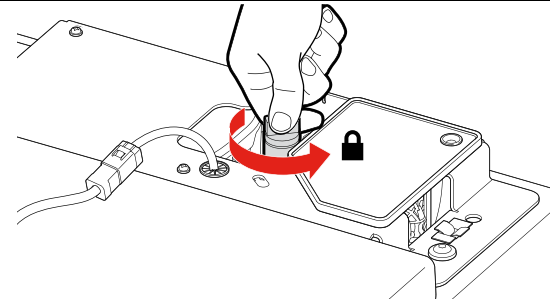


Before replacing the mechanism, shut off the toilet power supply line.

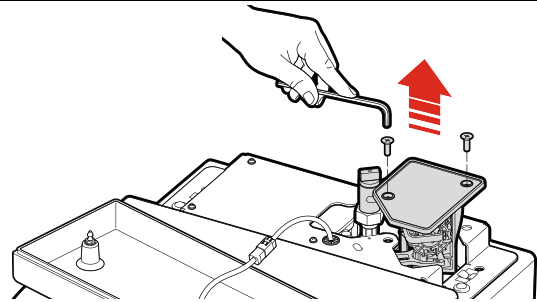
1



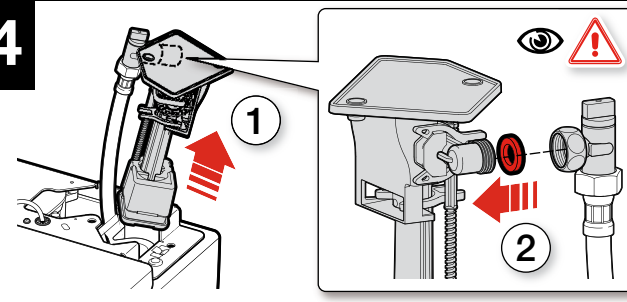
2



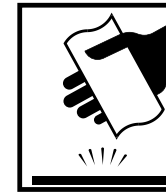
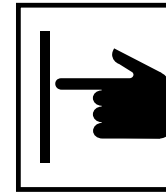
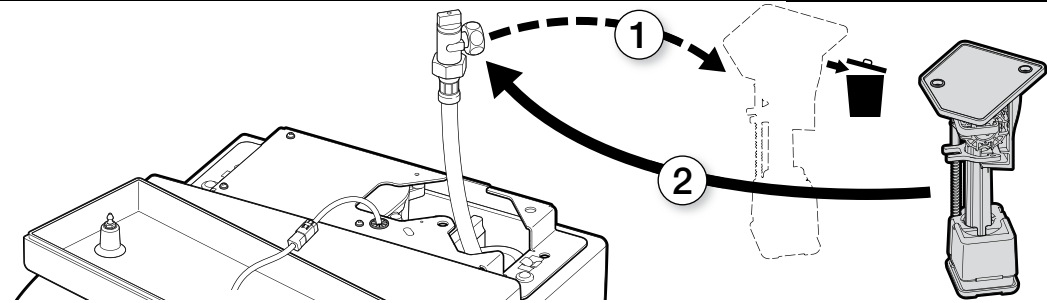
3



4



5

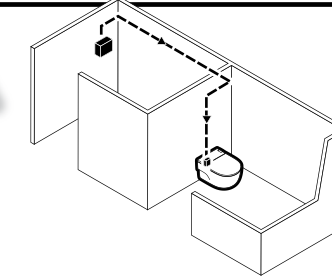


# IN-TANK

893301000

893302000

893303000



Before any maintenance operation, shut off the toilet power supply line.

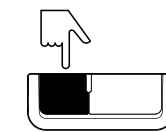
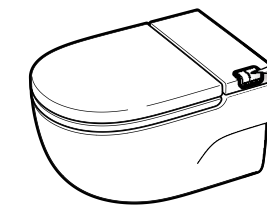


When WC has been unplugged for a long time or for the first use allow 5 minutes before operation.



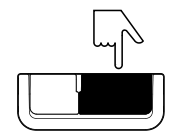
### 2 flush volumes:

- Full flush
- Reduced flush



3L

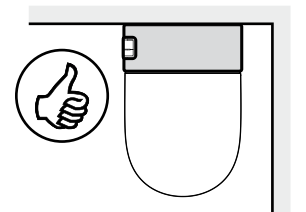
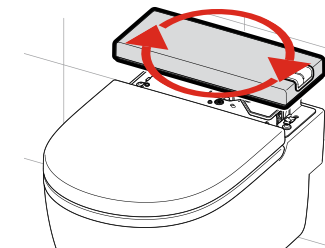
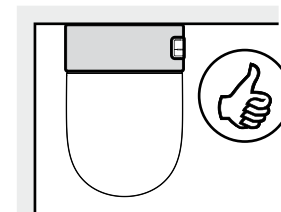
Reduced



4.5L

Full

### Option to install buttons on left or right



A392501290



Roca Sanitario, S.A.  
Avda. Diagonal, 513  
08029 Barcelona  
SPAIN  
www.roca.com



productsupport@roca.net  
soporteproducto@roca.net

### Flush volume adjustment

Decrease approx. 0.5L

Increase approx. 0.5L

### Light signal

After 1 or more flushes, the light flashes softly to indicate that the water tank is filling.

### Tank capacity

The water tank has 10 litres capacity, it allows the toilet to flush 3 times with 3L or 2 times with 4.5L if the water supply fails.

### Power supply failure

- In case of power supply failure, the toilet remains operative for a number of flushes (see table).

- When there is not enough power in the toilet, the light flashes at a high frequency.

	1	2	3	4	5	6	7	8	9	10	11	12
3L	█	█	█	█	█	█	█	█	█	█	█	█
4.5L	█	█	█	█	█	█	█	█	█	█	█	█

### In case of long periods without use

- 1 Remove rear cover
- 2 Close the stop valve
- 3 Flush until no water flushes
- 4 Shut off power supply line

When not using for a long period (especially in cold places to avoid the risk of freezing of the water in the tank, which could damage the toilet):

### Temperature usage range

5°C — 45°C

It is not recommended to install in places out of this range

### Range of inlet pressure

50 kPa (0,5 bar) ~ 1000 kPa (10 bar)

It is not recommended to install in places out of this range